



## SLC Series Eccentric Disc Pump

### Seal-less Design

The unique seal-less design features a double stainless steel bellows which ensures durability, safety and product containment. The SLC Series provides very high suction and discharge pressures which allows it to self-prime and fully strip lines, maximizing product recovery.

### Run Dry Capability

The SLC can run dry for up to 5 minutes, and the self-compensating eccentric disc principle provides consistent flow rates over a long period of time. The flow rate is extremely accurate even at low speeds.

### Dependable

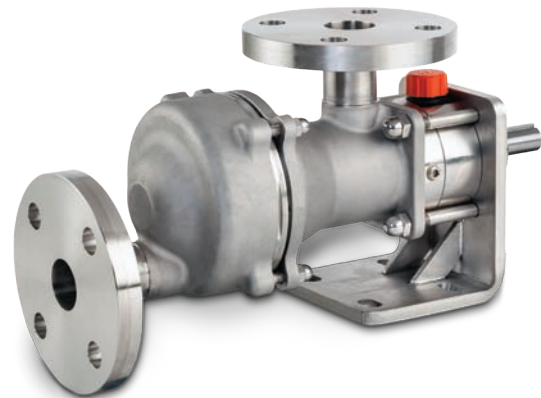
There are fewer moving parts, which results in reduced maintenance and downtime.

### Advantages:

- Eccentric Disc design allows for consistent flow and improved energy savings
- Extremely gentle, pulse-free flow to protect shear-sensitive products
- Reduced maintenance with no mechanical seals or timing gears
- Easy to install

### Options:

- ISO PN 20 flanges / ANSI150 flanges
- ISO PN 16 flanges
- Heating Jacket





# SLC Series Eccentric Disc Pump



### Operation:

- **Principle:** Eccentric Disc, positive displacement
- **Installation:** Can be base mounted or cart mounted for mobility

### Construction:

- All Stainless Steel construction
- Shaft sealed by double Stainless Steel bellows
- O-ring seals in FKM or coated FKM

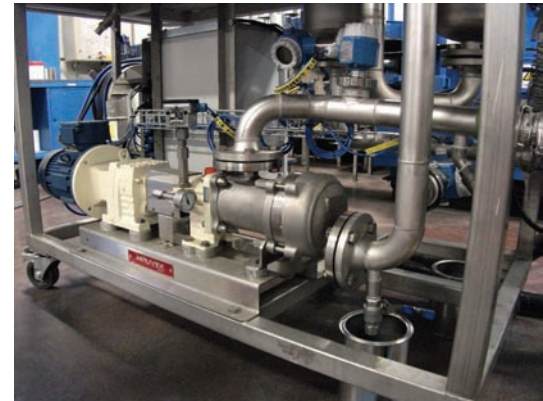
### Features & Benefits:

- Seal-less design eliminates leakage
- Ability to strip and drain transfer piping/tubing
- Line-stripping capabilities
- Self-priming
- Strong Suction and Discharge Pressure
- Shear-sensitive handling
- Consistent flow rate independent of pressure
- Low linear speed
- Precise dosing
- Accurate volume metering with high turn down
- Dry-run capable
- Maintains performance over time
- Effective with both high- and low-viscosity fluids
- Full drainability
- Easy integration

### Applications:

Suitable for most chemical and industrial transfer applications, in particular those that require consistent non-pulsing flow and gentle fluid handling (low shear rates), such as:

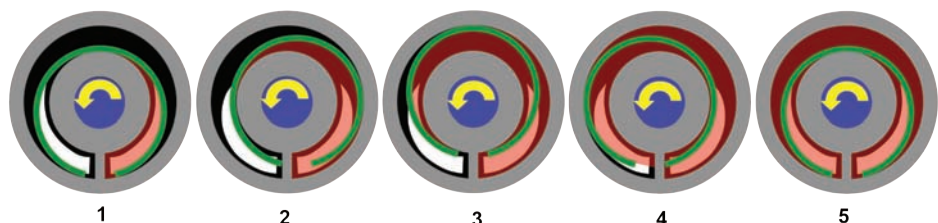
- Isocyanates
- Polyols
- Alcohol
- Acid
- Additives
- Solvents
- Glues: Starch, latex, etc.
- Paint & coatings: Paints, inks, resins, etc.
- Methacrylate
- Soda
- Ether
- Detergents



## Mouvex Technology

Eccentric disc pumps consist of a cylinder and pumping element mounted on an eccentric shaft. As the eccentric shaft is rotated, the pumping element forms chambers within the cylinder, which increase in size at the intake port, drawing fluid into the pumping chamber. The fluid is transported to the discharge port where the pumping chamber size is decreased. This action squeezes the fluid out into the discharge piping.

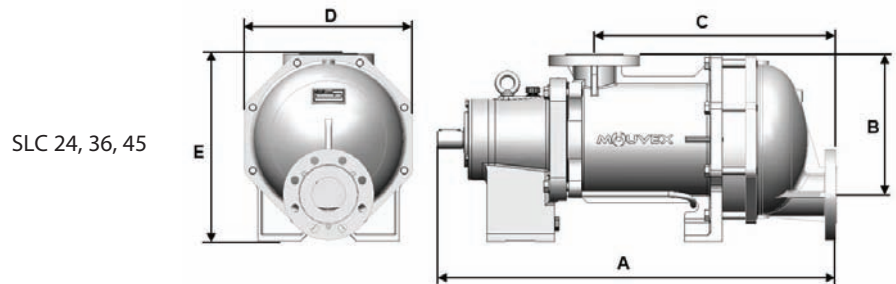
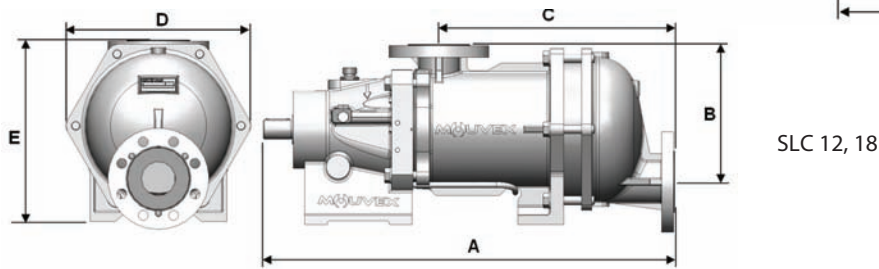
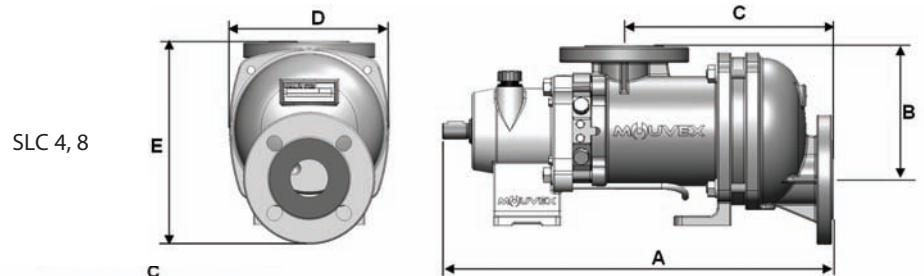
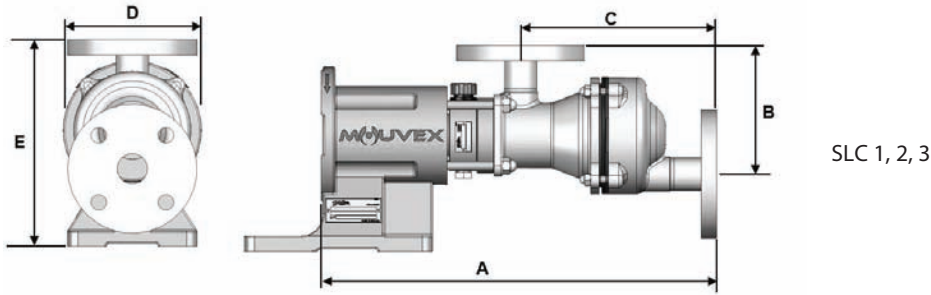
### Mouvex Principle



## Performance Data

Model	Max Speed	Max. Flow Rate	Max. Diff. Pressure
SLC1	1000 rpm	1 m <sup>3</sup> /hr (4.4 gpm)	16 bar (232 psi)
SLC2	1000 rpm	2 m <sup>3</sup> /hr (8.8 gpm)	10 bar (145 psi)
SLC3	1000 rpm	3 m <sup>3</sup> /hr (13.2 gpm)	6 bar (87 psi)
SLC4	750 rpm	4 m <sup>3</sup> /hr (17.6 gpm)	10 bar (145 psi)
SLC8	750 rpm	8 m <sup>3</sup> /hr (35.2 gpm)	6 bar (87 psi)

Model	Max Speed	Max. Flow Rate	Max. Diff. Pressure
SLC12	500 rpm	12 m <sup>3</sup> /hr (52.8 gpm)	9 bar (130 psi)
SLC18	500 rpm	18 m <sup>3</sup> /hr (79.25 gpm)	6 bar (87 psi)
SLC24	450 rpm	24 m <sup>3</sup> /hr (105.6 gpm)	9 bar (130 psi)
SLC36	450 rpm	36 m <sup>3</sup> /hr (158.5 gpm)	6 bar (87 psi)
SLC45	450 rpm	45 m <sup>3</sup> /hr (198 gpm)	6 bar (87 psi)



## Dimensions

Pump	A	B	C	D	E	Weight kg (lbs)	Port Size	
	mm (in)	mm (in)	mm (in)	mm (in)	mm (in)		mm	in
SLC1 SLC2 SLC3	459.50 (18.09)	150.20 (5.91)	229.50 (9.04)	175 (6.89)	258 (10.16)	23 (50.71)	DN40	1 1/2"
SLC4	499 (19.65)	171 (6.73)	267 (10.51)	200 (7.87)	229 (9.02)	40.50 (89.29)	DN50	2"
SLC8	516 (20.31)	171 (6.73)	284 (11.18)	200 (7.87)	229 (9.02)	43 (94.80)	DN50	2"
SLC12	764 (30.08)	253 (9.96)	438 (17.24)	338 (13.31)	331.50 (13.05)	116 (255.74)	DN65	2 1/2"
SLC18	784 (30.87)	253 (9.96)	458 (18.03)	338 (13.31)	331.50 (13.05)	122 (268.96)	DN65	2 1/2"
SLC24	879 (34.61)	308 (12.13)	533.50 (21)	369 (14.49)	411 (16.18)	165 (363.76)	DN80	3"
SLC36	905.50 (35.65)	308 (12.13)	560 (22.05)	368 (14.49)	411 (16.18)	180 (396.83)	DN80	3"
SLC45	879 (34.61)	308 (12.13)	533.50 (21)	369 (14.49)	411 (16.18)	165 (363.76)	DN80	3"



ZI la Plaine des Isles • 2 rue des Caillottes  
F-89000 AUXERRE - FRANCE  
T: + 33.3.86.49.86.30  
F: + 33.3.86.46.42.10  
contact@mouvex.com  
[mouvex.com](http://mouvex.com)

Where Innovation Flows



Authorized PSG® Partner: